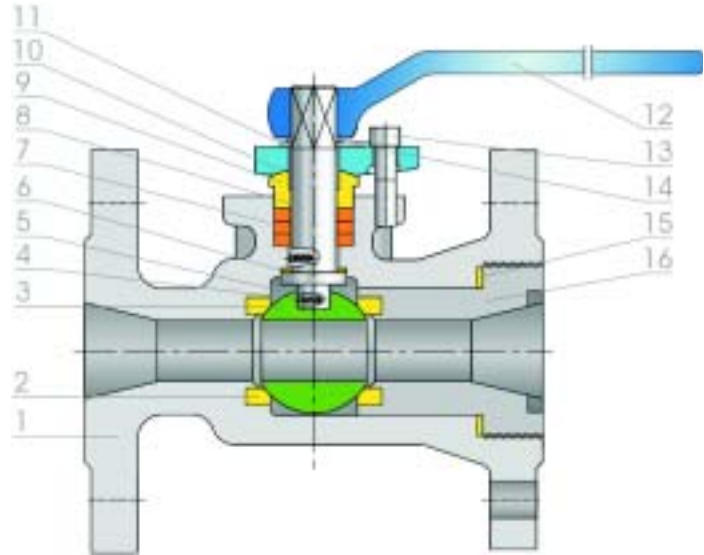




Series YQ Floating Ball Valves

Features

- Uni-body construction.
- Stem bearings reduce side thrust.
- Blowout-proof stem.
- Fully enclosed spiral wound graphite
Filled stainless body gasket available.
- Locking devices available.
- Live-loading available.



Standards

- Basic design: API 608
- Flanged ends: ASME B16.5
- Face to face: ASME B16.10
- Inspection and test: API 598

Series YQ material specifications

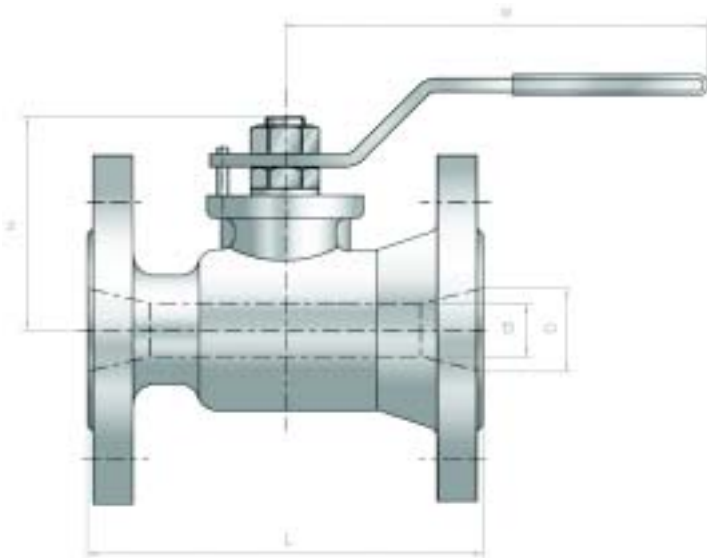
No.	Parts	Standard	Stainless Steel	Sour Service	Low Temperature Service
1	Body	ASTM A216 WCB	ASTM A351 CF8M	ASTM A216 WCB	ASTM A352 LCB
2	Seat Ring	R-PTFE	R-PTFE	R-PTFE	R-PTFE
3	Ball	ASTM A105/ENP	ASTM A182 F316	ASTM A105/ENP	ASTM A182 F316
4	Plug	S.S.	S.S.	S.S.	S.S.
5	Spring	S.S.	S.S.	S.S.	S.S.
6	Washer	PTFE	PTFE	PTFE	PTFE
7	Packing	PTFE	PTFE	PTFE	PTFE
8	Stem	ASTM A182 F6a	ASTM A182 F316	ASTM A182 F6a	ASTM A182 F316
9	Gland	ASTM A276 420	ASTM A276 316	ASTM A276 420	ASTM A276 316
10	Gland flang	ASTM A216 WCB	ASTM A351 CF8M	ASTM A216 WCB	ASTM A352 LCB
11	Gauge block	C.S.	S.S.	C.S.	S.S.
12	Lever	Ductile Iron	Ductile Iron	Ductile Iron	Ductile Iron
13	Bolt	ASTM A193 B7	ASTM A193 B8	ASTM A193 B7M	ASTM A320 L7M
14	Retaining ring	C.S.	S.S.	C.S.	S.S.
15	Gasket	PTFE	316+Graphite	PTFE	PTFE
16	Closure	ASTM A216 WCB	ASTM A351 CF8M	ASTM A216 WCB	ASTM A352 LCB



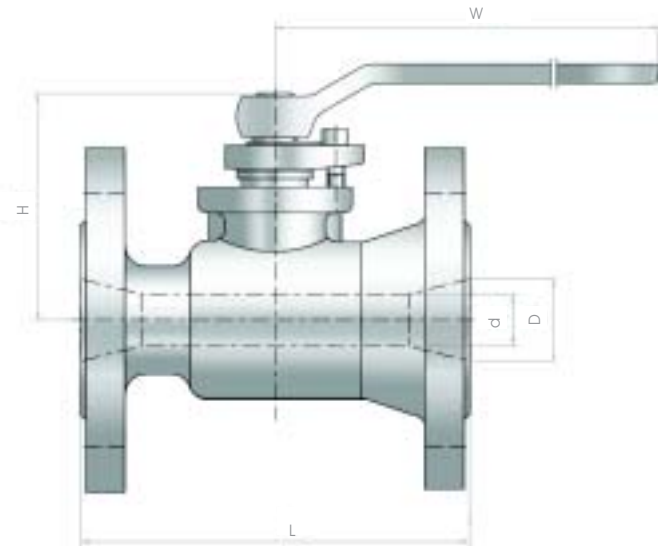
Series YQ Floating Ball Valves

Class 150/300

Regular Port, Uni-Body, Cast Steel, End Entry Design



1/2" ~2"



3" ~10"

Dimensions(150lb)

Size (in.)	1/2	3/4	1	1 1/2	2	2 1/2	3	4	6	8	10
d (mm)	9.5	12.7	19	30	38	51	64	76	114	144	187
D(mm)	12.7	19	25.4	38	51	64	76	102	152	203	254
L (mm)	108	117	127	165	178	191	203	229	267	292	330
H(mm)	54	59	64	90	102	112	121	166	208	246	303
W (mm)	140	140	160	160	260	260	260	320	400	300	400
Weight (kg)	2.1	3	4.1	6.5	9	11.2	15.3	28.6	53	81	150

Dimensions(300lb)

Size (In.)	1/2	3/4	1	1 1/2	2	2 1/2	3	4	6	8	10
d (mm)	9.5	12.7	19	30	38	51	64	76	114	144	187
D(mm)	12.7	19	25.4	38	51	64	76	102	152	203	254
L (mm)	140	152	165	190	216	241	283	305	403	419	457
H(mm)	54	59	64	90	102	112	121	166	208	246	303
W (mm)	140	140	160	160	260	260	260	320	300	300	400
Weight (kg)	2.8	3.6	4.9	10.4	10	16.1	23	39.5	82	124	206